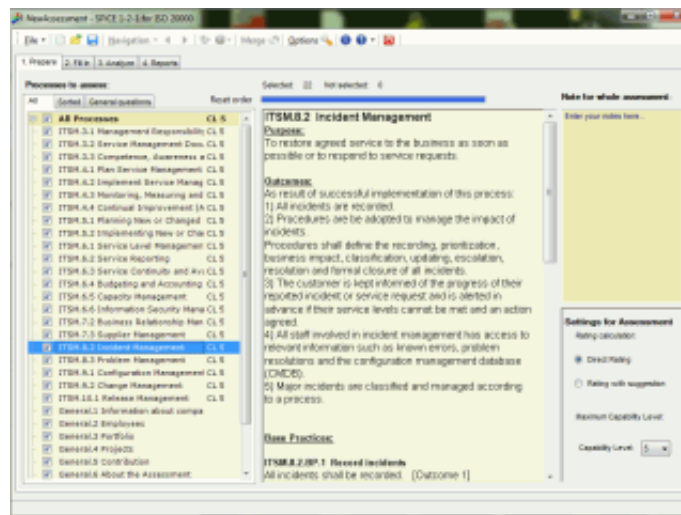


Screenshots

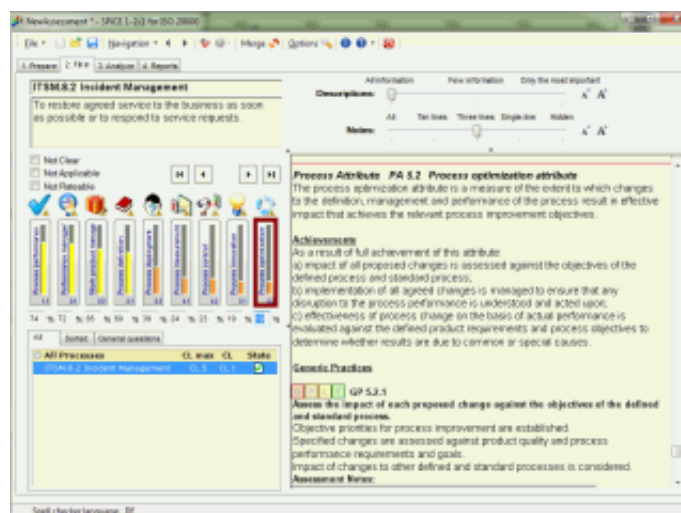
The screenshots give you a first impression of the tool, nevertheless the usage can be best experienced if you [download](#) the demo version and see it live...

The assessment process is organized in four steps:

Step 1: "Prepare" - Select the processes to assess:



Step 2: "Fill In" - Answer / rate the processes:



Step 3: "Analyze" - Evaluation and charting

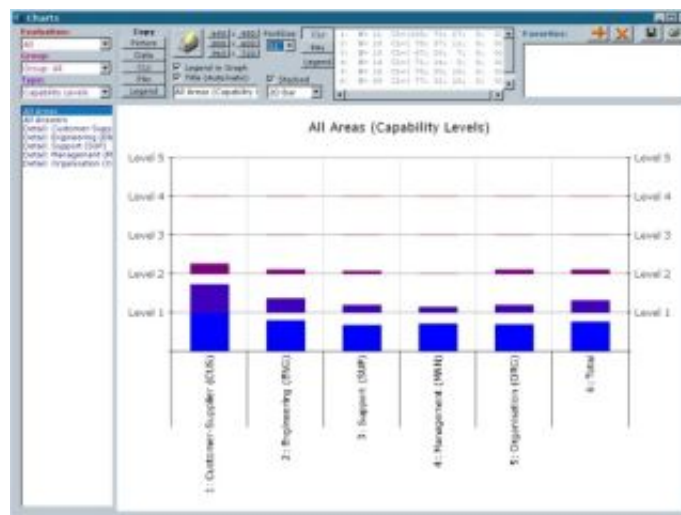
3. Quite similar to 2.) you can create groups, but this time in respect to the chronological order.
E.g. you can compare your assessment results from 2006 to 2007 to 2008 etc...

The Result (of all three procedures):

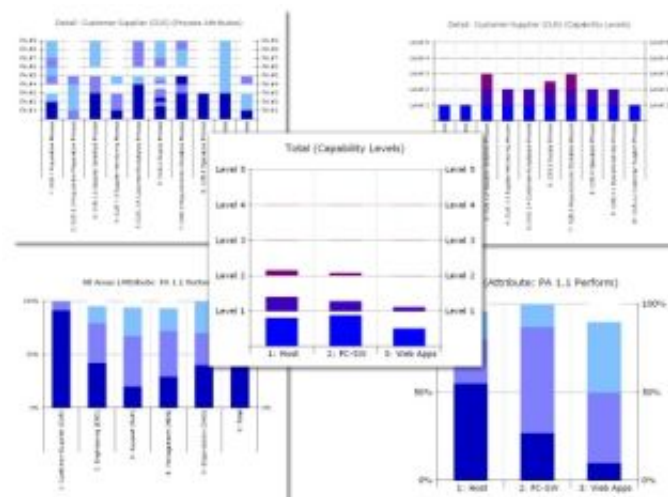
- Global strengths and weaknesses can be distinguished from single highlights/lowlights.
- Characteristics of each group can be understood.
- Trends can be identified.

SynEval consolidates thousands of numbers! Still hundreds of different charts can be displayed, but these are arranged in such a way that the (lead) assessor easily can put the relevant results together, e.g. to create a report or a paper for presentation.

The Evaluation Screen:



...and additional samples for the evaluations:



SynEdit

Additionally the [Corporate Solution](#) contains the tool SynEdit.

With SynEdit you can customize the SPICE 1-2-1 assessment tool to fit your individual needs: The processes can be edited and enhanced, the explanations can link to your company own documents and all icons and captions can be adapted.

For additional information, licensing and availability, please [contact](#) us!